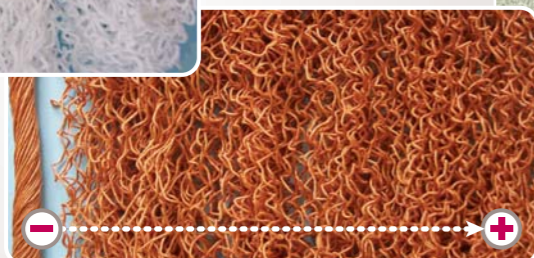
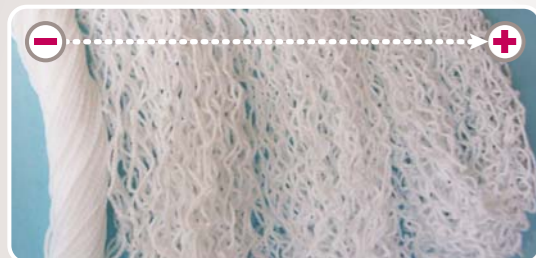


> Offers a wider range of friezing effects



> All frieze effects are possible from very low to very high; this includes a similar look as the knit-de-knit process

> Delicate yarn can be processed (single end with low twist and/or low DPF yarn types).

Technical information

Number of ends	24 to 48 & up to 60 ends	Air pressure	90 psi
Production speed	600 m/min	Steam consumption	2 Kgs/h
Installed power	9 KVA	Weight	580 Kgs
Average consumption	1.5 Kw/h	Dimensions H x L x W (m)	1.49 x 1.12 x 1.02

> Do not hesitate to contact our sales team for any question or specific demands.

SUPERBA®

Advanced heat-setting solutions



SUPERBA S.A.S.

147 avenue Robert Schuman
68055 MULHOUSE Cedex - FRANCE
Tel. +33 389 362 727
Fax +33 389 362 773
www.superba.com



AMERICAN SUPERBA INC.

2850 North Dug Gap Road SW
P.O. Box 2603
DALTON, GEORGIA 30722 - USA
Tel. +1 706 277 5400
Fax +1 706 277 5410
www.americansuperba.com



SUPERBA SHANGHAI

C 303 Jiahua Business Center
N° 808 Hongqiao Road
Shanghai P. R. China 200030
Tel. +86 21 6407 9515
Fax +86 21 6407 9516
www.superba.com



SUPERBA MIDDLE-EAST FZE

Office 0520, Bldg No 2
EMAAR Business Park
Sheikh Zayed Road - Dubai - U.A.E.
Tel. +971 4 3689858
Fax +971 4 3689860
www.superbame.com

MF4

Friezing machine for carpet yarns



> Frieze effect



TVP3 heat-setting line accessory

SUPERBA®

Advanced heat-setting solutions

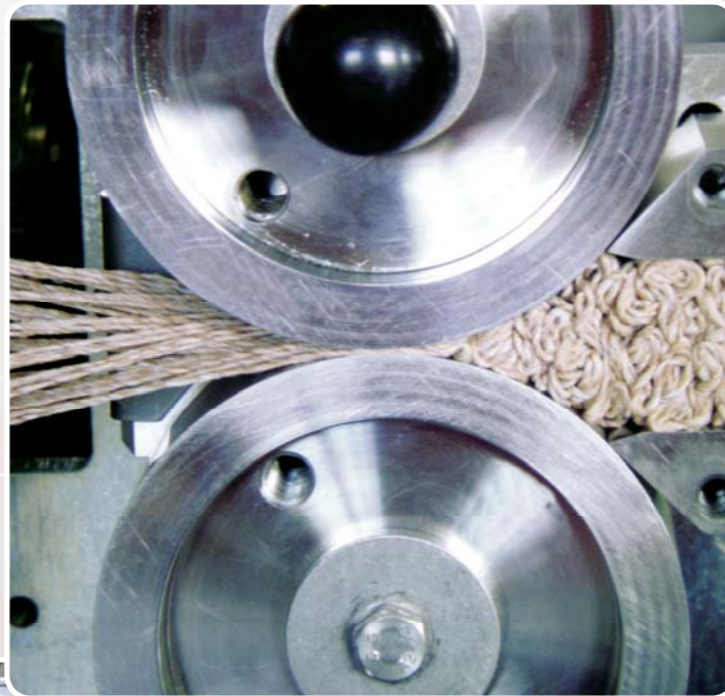
MF4

Sets the new standard in friezing



MAIN ADVANTAGES OF THE MF4

- > Possibility to produce a wide range of frieze effects: Knit-de-knit and MF2 (unequal yarn wave lengths) styles can be achieved with the MF4 friezing machine
- > With the increased texturing possibilities of the MF4, in certain cases twist levels can be reduced (twisting process cost reduction)
- > The MF4 increases reliability, reproducibility and allows a wider range of yarns to be processed such as single yarn with low twist and low DPF yarns.
- > The friezing machine is very easy to set up and needs very little maintenance:
 - > Only one type of feeding roller for almost any yarn type
 - > Quick & easy threading
 - > Compact machine easy to insert or remove from the heat-setting line (quick connection compatible with TVP2, TVP2S as well as with TVP3)



> Only one type of roller is used for almost any type of yarn



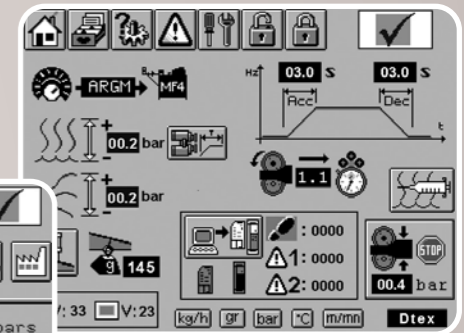
> Adjustment of the desired frieze effect is achieved through a pneumatic jack controlled by PLC

ERGONOMIC & EASY TO USE

- > The MF4 friezing machine integrates a PLC system to control both the feeding rollers and the false twist (high precision servo drive)
- > Electronic adjustment of all running parameters thanks to a 6" touch-screen command panel that enables:
 - > Adjustment of the desired frieze effect
 - > Automatic adjustment of the zero point of the false twist
 - > Steam injection control
 - > Monitoring of input yarn tension & speed
 - > Inverter control
 - > Easy trouble shooting with dedicated error page
- > 200 stored recipes (production settings)
- > Fully icons & graphics based menu for easy and immediate function comprehension independent from operator's language



- > The MF4 can be connected to the ARG/PRO process controller (for TVP2S) or directly to the TVP3 for automatic speed control of the laying & the PRE3 pre-feeding device (for yarn tension setting)
- > SUPERVISION features are available by connecting the MF4 to our PLANT-TRACK software package (machine status, recipe transfer, ...) – option –



> The touch screen allows easy access to all operating parameters

A SIGNIFICANT PRODUCTION INCREASE

- > The MF4 is an entirely new concept compared to previous friezing machine generation
- > This machine enables at least a +30% production increase vs MF2S (up to 450grs/m, 450 to 500kgs/h with a TVP3 heat-setting line of appropriate length)
- > 48 and up to 60 ends (6000dTex max.) can be simultaneously processed with a laying speed of up to 600m/min



> The entrance guide ensures the best yarn control