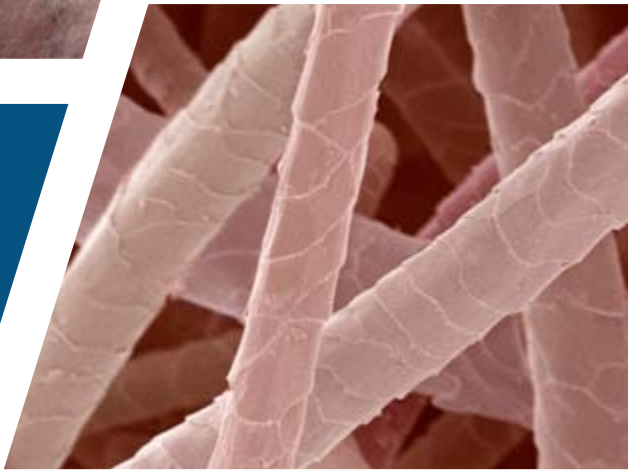
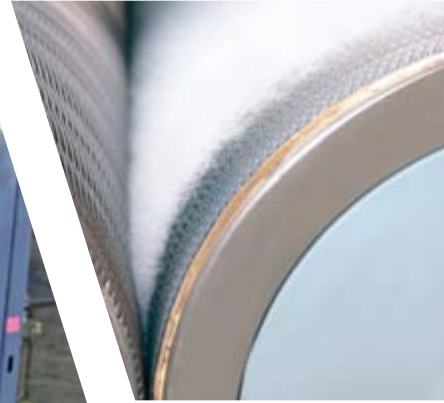
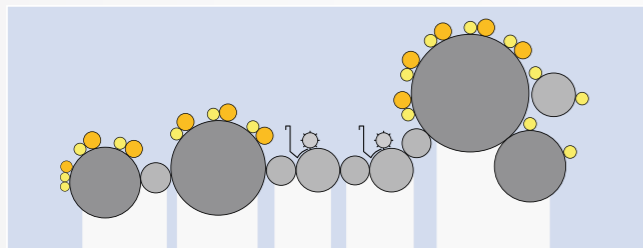


## LONG STAPLE CARDS



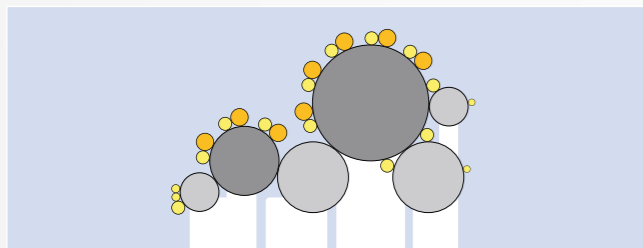
### A complete range of long staple roller cards:

- Worsted cards
- Semi-worsted cards
- Flax cards



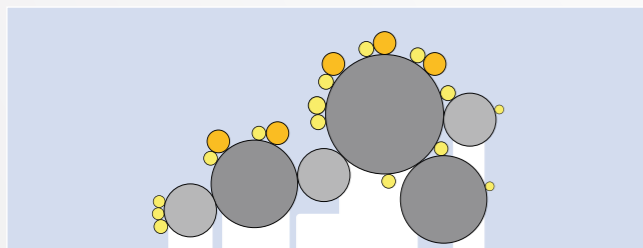
### *Worsted cards*

Designed to process wool or any type of natural fibres as cashmere, alpaca, mohair as well as synthetic fibres and silk noil for top making units. It is equipped with morel rollers for the removing the v.m. from the scoured wool.



### *Semi-worsted cards*

Suited to the processing both of natural fibres and of synthetic fibres, the semi-worsted card can be incorporated into any semi-worsted process line to make yarns for carpet or knitting applications.



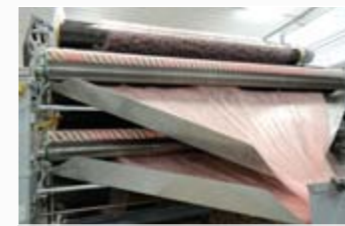
### *Flax cards*

This card is especially adapted to the process of flax tow and bast fibres. It is provided with a bale opener, especially adapted to the hard fibres.



The continuous flow volumetric feeder determines the uniform distribution of fibres. It is achieved by high precision machines which accurately control the fibre control.

To complement their high performance feed systems and particularly on small lots with short manufacturing cycles, the cards can be supplied on option with an in-feed autoleveller.



The cards are equipped with single or double doffers at delivery: detaching rollers or combs allows to process all type of fibres.



Easy access to all card drives and rollers to reduce the time required for maintenance operations: removable side guards and quick and simply opening of the grids under the card without losing their settings. Variable speed motor drives to allow operational changes of sliver weight, rate of production and carding intensity.



Located at the delivery the drafting head allows adjustment of the sliver weight.



Control panel with touch screen help to reduce the number, frequency and time required for setting: centralized readout and control of the different production parameters.



To preserve environmental air-quality objectives in the mill, the cards are supplied with an integrated suction system. This includes several extractors nozzles, placed in the width and above the breast and main cylinder, as well as in the area of the web consolidation and drafting head zones.

## Long staple cards

### Technical characteristics

	Worsted cards	Semi-worsted cards	Flax cards
Uses	Any type of Wool, Mohair, other hairs Silk noils Synthetic fibres	Natural fibres Synthetic fibres	Flax tow Bast fibres
Main swift	Ø 1500 mm	Ø 1500 mm	Ø 1200 mm
Card feeder	Continuous volumetric feeder	Continuous volumetric feeder	Continuous volumetric feeder + bale opener specific to hard fibres
Delivery	Automatic with reducing head Ø 1000 or 1200 mm Height 1200 or 1400 mm	Automatic with reducing head Ø 1000 or 1200 mm Height 1200 or 1400 mm	Automatic with or without reducing head Ø 700 or 1000 mm Height 1000 or 1200 mm
Working width	2.50 m – 3.50 m depending on processed material and aimed production	2.50 m – 3.50 m depending on processed material and aimed production	2.50 m – 3.50 m depending on processed material and aimed production
Suction cleaning network	Built-in, including the fan	Built-in, including the fan	Built-in, including the fan

**n. schlumberger**

240 Rue de la République  
CS10079 68500 GUEBWILLER FRANCE  
TEL. +33 (0)3 89 74 41 41  
FAX +33 (0)3 89 74 40 63  
nsc@nsc.fr

[www.nsc-schlumberger.com](http://www.nsc-schlumberger.com)